



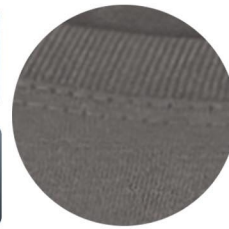
**ATC8003L**

**Product Features:**

- 6.8-oz, 100% combed and ring spun cotton
- Ultra soft 30 single jersey
- Double needle cover stitch at sleeve and bottom hem

Ladies' sizes: XS-4XL

**Icons/Fabric Features:**



**Available Colours and PMS Colours**

Textile fabric colours are subject to dye lot variation and will not be exact match to print pantone reference



# ATC8003L - ATC™ / EUROSPUN® Ring Spun 3/4 Sleeve Ladies' Tee

## GARMENT MEASUREMENTS

Size	XS	S	M	L	XL	2XL	3XL	4XL
<b>Chest - Half Measure</b>	15 1/4"	16 1/4"	17 1/4"	18 3/4"	20 1/4"	21 3/4"	23 3/4"	25 3/4"
<b>Chest - Full Measure</b>	30 1/2"	32 1/2"	34 1/2"	37 1/2"	40 1/2"	43 1/2"	47 1/2"	51 1/2"
<b>Body Length from HPS</b>	26"	26 1/2"	27"	28"	29"	30"	30 1/2"	31"
<b>Sleeve Length-CB</b>	21 3/4"	22 1/4"	22 3/4"	23 1/2"	24 1/4"	25"	25 3/4"	26 1/2"

*Finished measurements in inches. Refer to "How to Measure" guide for detailed information on measurement instructions.*

## LADIES' General Sizing Guide

Size	XS	S	M	L	XL	2XL	3XL	4XL
<b>Numeric Size</b>	2	4-6	8-10	12-14	16	18-20	22	24
<b>Bust</b>	32"-34"	35"-36"	37"-38"	39"-41"	42"-44"	45"-47"	48"-51"	52"-55"
<b>Waist</b>	24"-25"	26"-27"	28"-30"	30"-32"	33"-35"	36"-38"	40"-42"	42"-44"
<b>Hip</b>	33"-35"	35"-37"	37"-39"	39"-41"	42"-44"	45"-47"	48"-50"	50"-52"
<b>Sleeve Length-CB</b>	30"-30 1/2"	30 1/2"-31"	31 1/2"-32"	32 1/2"-33"	33 1/2"-34"	34"-34 1/2"	34 1/2"-35"	34 1/2"-35"

