



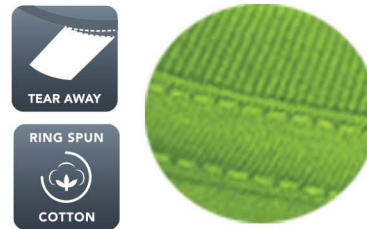
ATC8000

Product Features:

- 6.8-oz, 100% combed and ring spun cotton
- Ultra soft 30 single jersey
- Double needle cover stitch at sleeve and bottom hem

Adult sizes: XS-4XL

Icons/Fabric Features:



Available Colours and PMS Colours

Textile fabric colours are subject to dye lot variation and will not be exact match to print pantone reference



*95/5 cotton/viscose **65/35 polyester/cotton ***60/40 cotton/polyester

Due to the nature of printed fabrics, special care must be taken throughout the printing process.

ATC8000 - ATC™ / EUROSPUN® Ring Spun Tee

GARMENT MEASUREMENTS

| Size | XS | S | M | L | XL | 2XL | 3XL | 4XL |
|----------------------|---------|---------|---------|---------|---------|---------|---------|---------|
| Chest - Half Measure | 18 1/2" | 20" | 21 1/2" | 23" | 24 1/2" | 26" | 28" | 30" |
| Chest - Full Measure | 37" | 40" | 43" | 46" | 49" | 52" | 56" | 60" |
| Body Length from HPS | 27 1/2" | 28 1/2" | 29 1/2" | 30 1/2" | 31 1/2" | 32 1/2" | 33" | 33 1/2" |
| Sleeve Length-CB | 17 3/4" | 18 1/2" | 19 1/4" | 20" | 20 3/4" | 21 1/2" | 22 1/4" | 23" |

Finished measurements in inches. Refer to "How to Measure" guide for detailed information on measurement instructions.

ADULT General Sizing Guide

| Size | XS | S | M | L | XL | 2XL | 3XL | 4XL |
|------------------|---------|-------------|---------|---------|---------|---------|---------|-------------|
| Chest | 30"-32" | 34"-36" | 38"-40" | 42"-44" | 46"-48" | 50"-52" | 54"-55" | 56"-57" |
| Waist | 26"-29" | 29"-32" | 32"-35" | 35"-38" | 38"-41" | 41"-44" | 44"-47" | 47"-50" |
| Sleeve Length-CB | 31"-32" | 32"-33 1/2" | 34"-35" | 35"-36" | 36"-37" | 37"-38" | 38"-39" | 38 1/2"-39" |



DECORATION RECOMMENDATIONS FOR PRINTED FABRICS:

Due to the nature of printed fabrics, special care must be taken throughout the decoration process. Here are some tips to effectively decorate printed fabrics:

Screen Printing Tips:

- Garment dyes may bleed through screen printed inks, especially when printing on top of print that contains red dye. Sublimation will be most noticeable when using white or light colour inks and may take 24-48 hours to occur.
- Use base blocker ink first (grey works best)
- Using low bleed poly ink is recommended
- Use coarse mesh
- Do not exceed recommended dryer temperature
- Check with your ink supplier for other tips

Heat Transfer Tips:

- Use of vinyl heat transfer may help minimize sublimation
- Use cover sheet/flexible application sheet to shield upper platen from sublimation dyes
- Do not exceed recommended temperature
- Check with your heat transfer supplier for other tips

A test sample run is recommended, especially if you have a large order or if your decorator does not specialize in printed fabrics.